

Seed Aide®

Significantly Improves Seed Establishment and Reduces Soil Erosion

PROFILE *SEED AIDE* Provides Hydroseed Results in Both Performance and Appearance Through Many Unique Product Benefits:

- ✓ Completely Weed Free & Chemical Free
- ✓ Biodegrades; No clean up required
- ✓ Stores Moisture & Nutrients
- ✓ Enhances Root Development
- ✓ Safe & Easy to Use by hand or Conventional Spreaders
- ✓ Green Color Granules Provide Grass Appearance During Turf Establishment

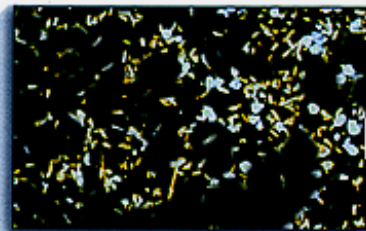
PHYSICAL PROPERTIES

Water Holding Capacity	400%
Bulk Density	25-30 lbs /cu ft
Color	Blue-Green

INGREDIENTS

Cellulose Fiber, Wood Fiber, Clay, Moisture Content, Organic Tackifier, Marker Dye, Seaweed Extract

Easy Application for Guaranteed Results



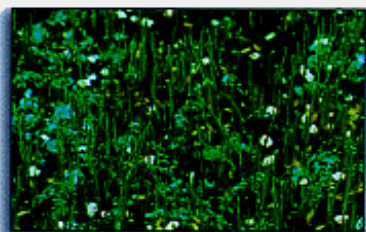
1 Prepare the soil surface. Apply seed and fertilizer.



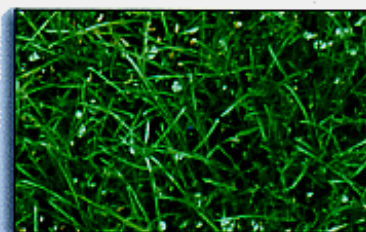
2 Apply *SEED AIDE* with a conventional broadcast spreader, drop spreader or by hand.



3 Water after application. *SEED AIDE* reduces soil erosion and water runoff.



4 *SEED AIDE* will absorb water and expand to cover seed and soil.



5 *SEED AIDE* holds water and nutrients for rapid seed germination and turf establishment.



6 Hydroseed results.